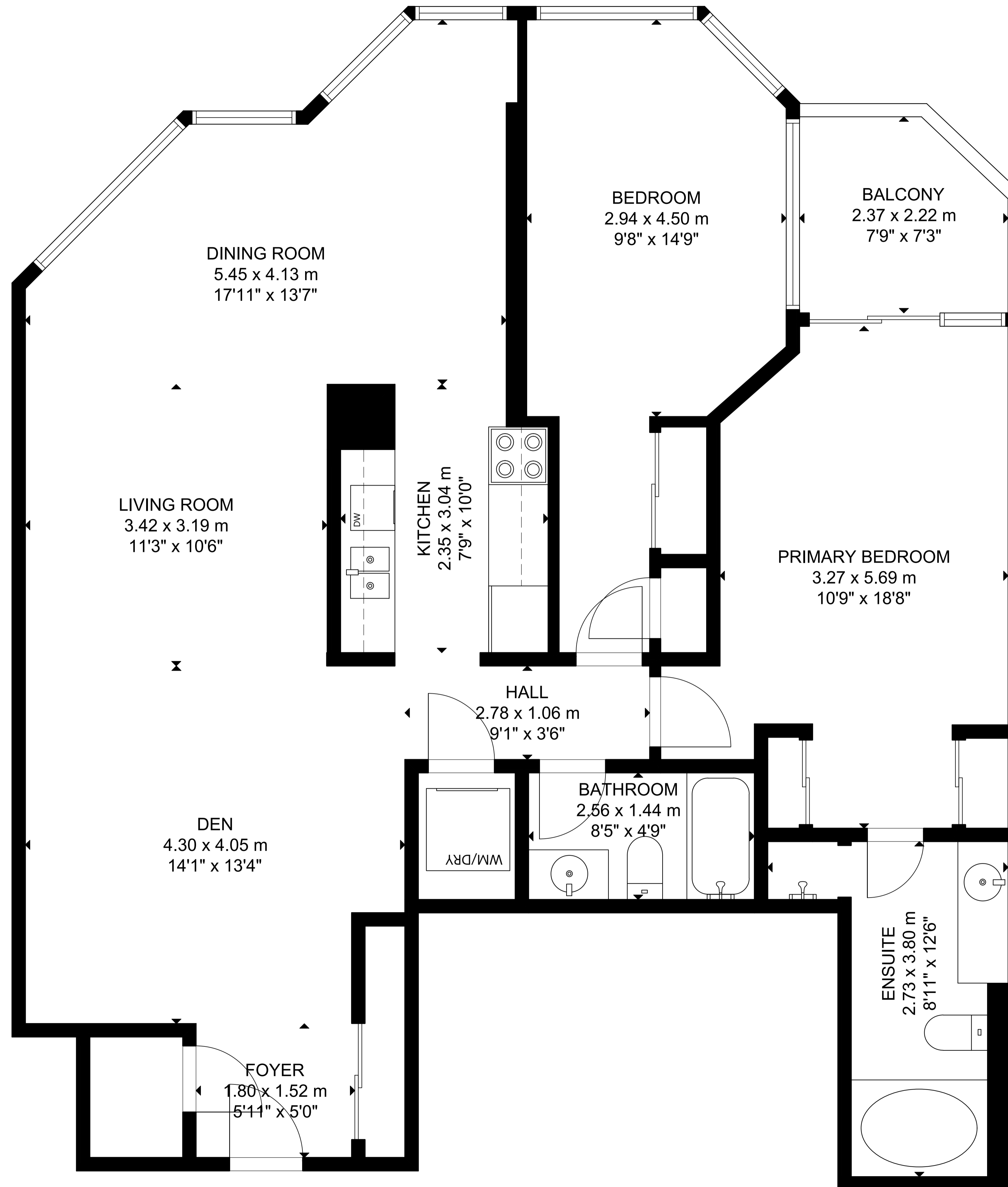


3 Rowntree Road, Suite 1709



MAIN FLOOR

GROSS INTERNAL AREA
MAIN FLOOR: 112 m²/1,207 sq ft
EXCLUDED AREA: BALCONY: 5 m²/52 sq ft
TOTAL: 112 m²/1,207 sq ft
SIZE AND DIMENSIONS ARE APPROXIMATE, ACTUAL MAY VARY.