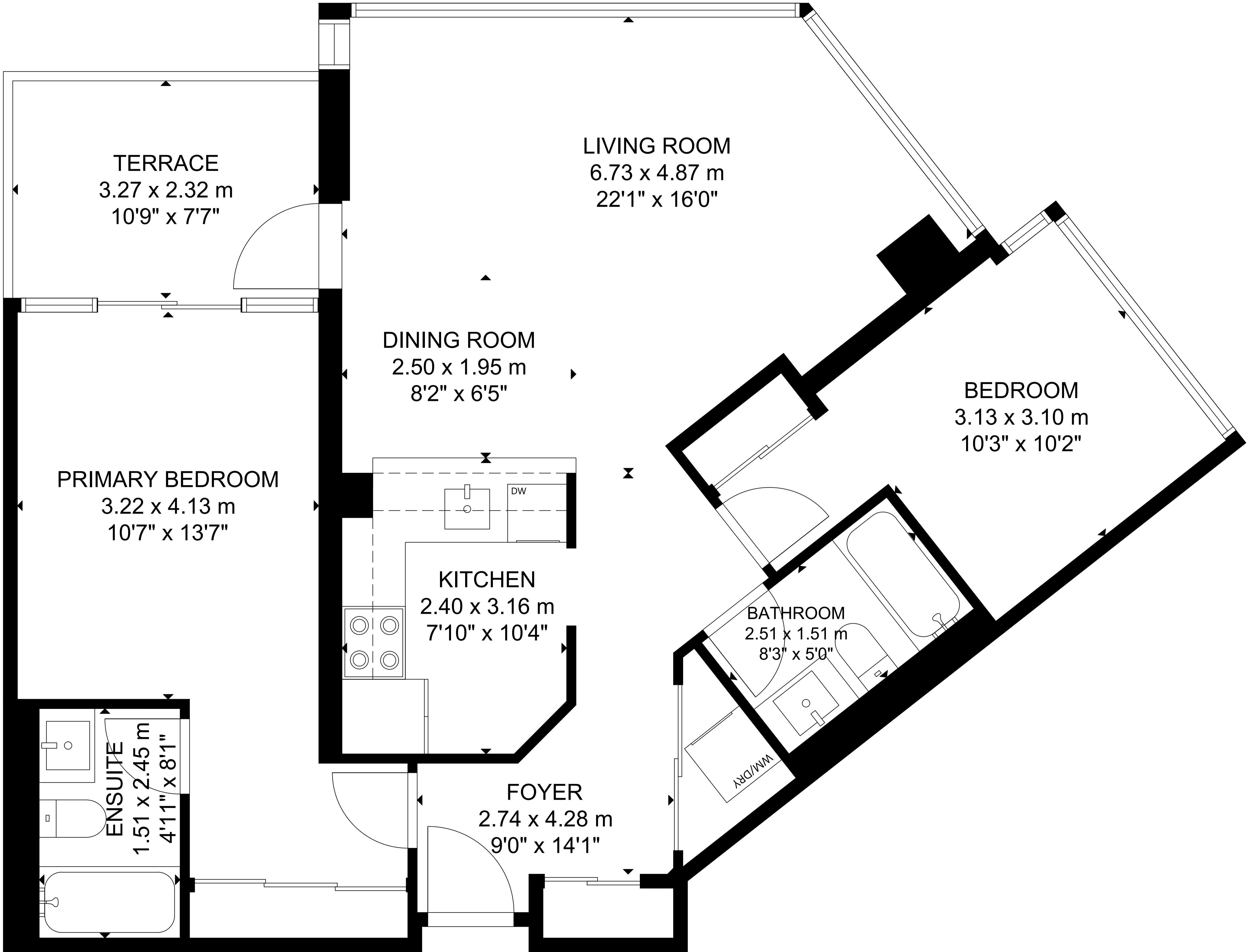


3050 Ellesmere Road, Suite 1014



MAIN FLOOR

GROSS INTERNAL AREA
MAIN FLOOR: 86 m²/927 sq ft
EXCLUDED AREA: TERRACE: 8 m²/82 sq ft
TOTAL: 86 m²/927 sq ft
SIZE AND DIMENSIONS ARE APPROXIMATE, ACTUAL MAY VARY.