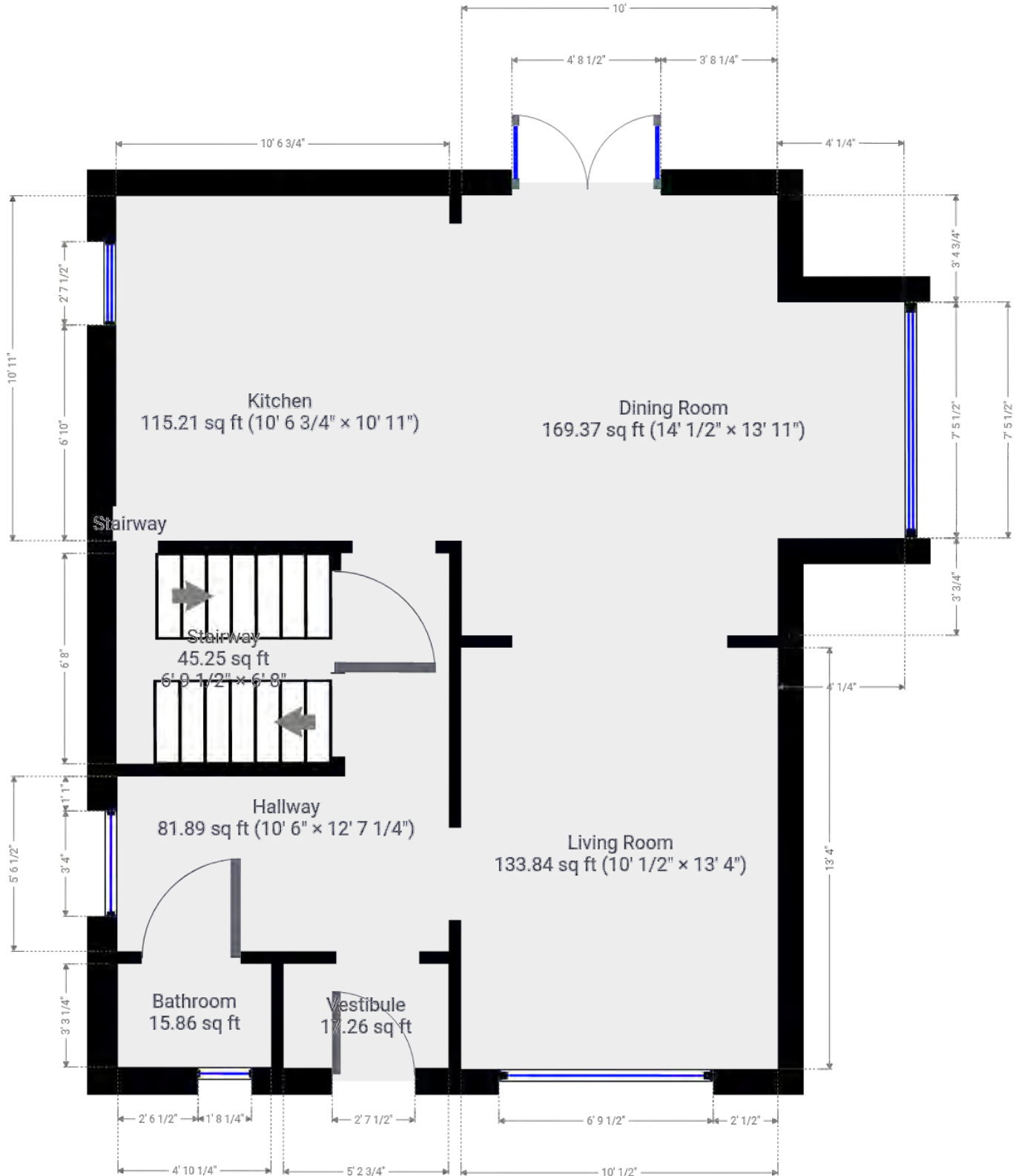




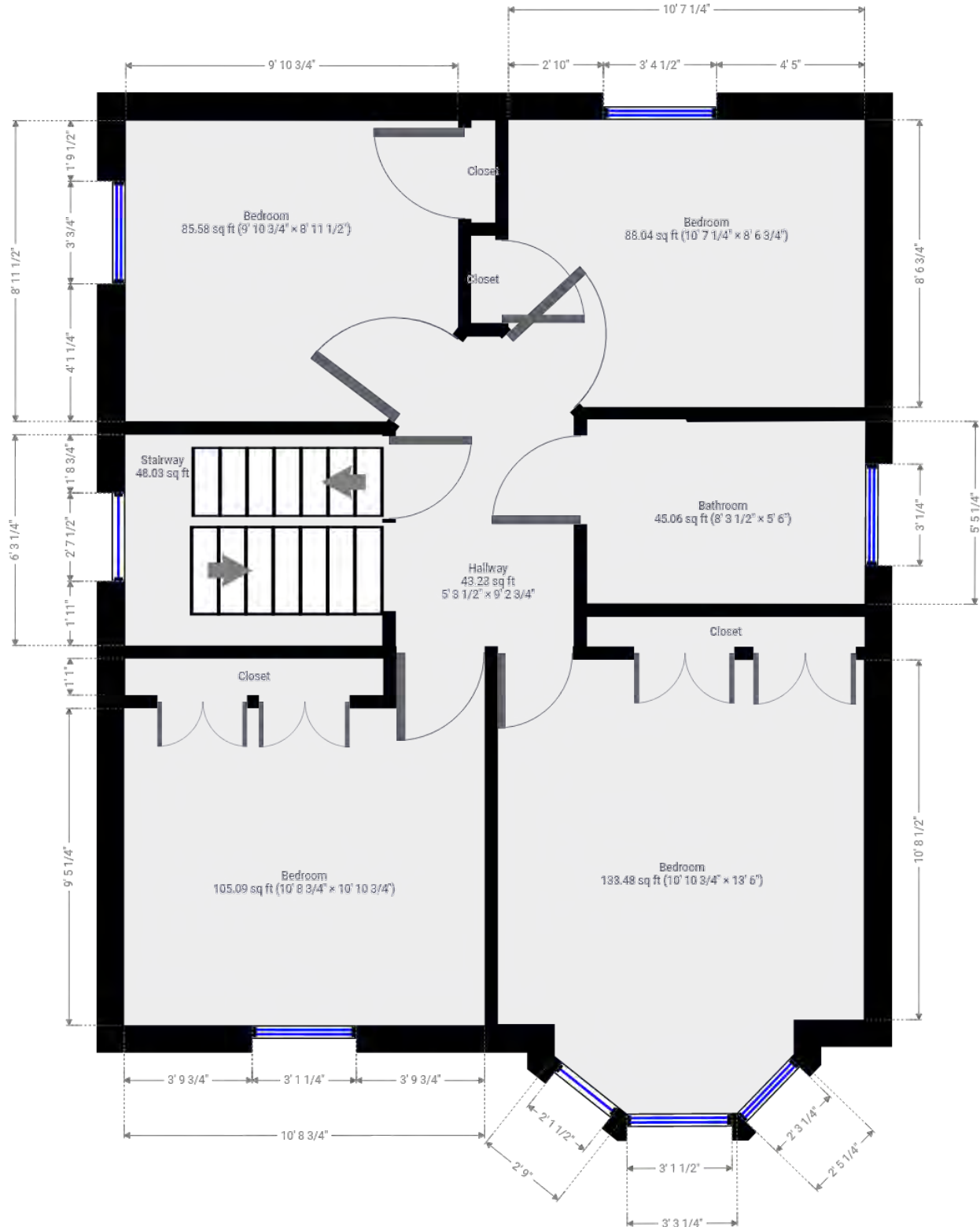
**Ground Floor**  
(above grade)

Approx Interior Area = 608.37 ft<sup>2</sup>  
Approx Exterior Area = 697.57 ft<sup>2</sup>



**Second Floor**  
(above grade)

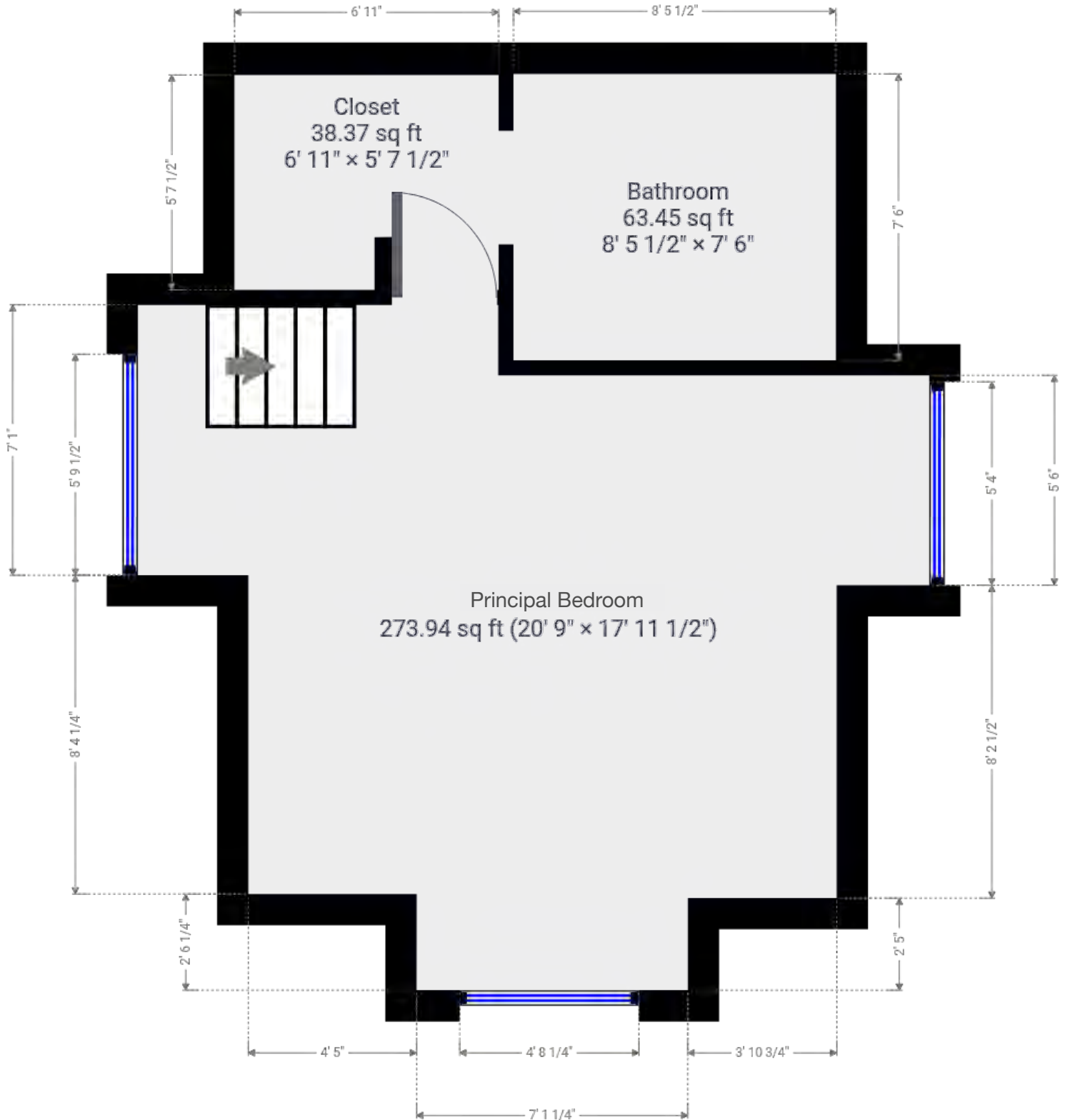
Approx Interior Area = 607.71 ft<sup>2</sup>  
Approx Exterior Area = 693.15 ft<sup>2</sup>





**Third Floor**  
(above grade)

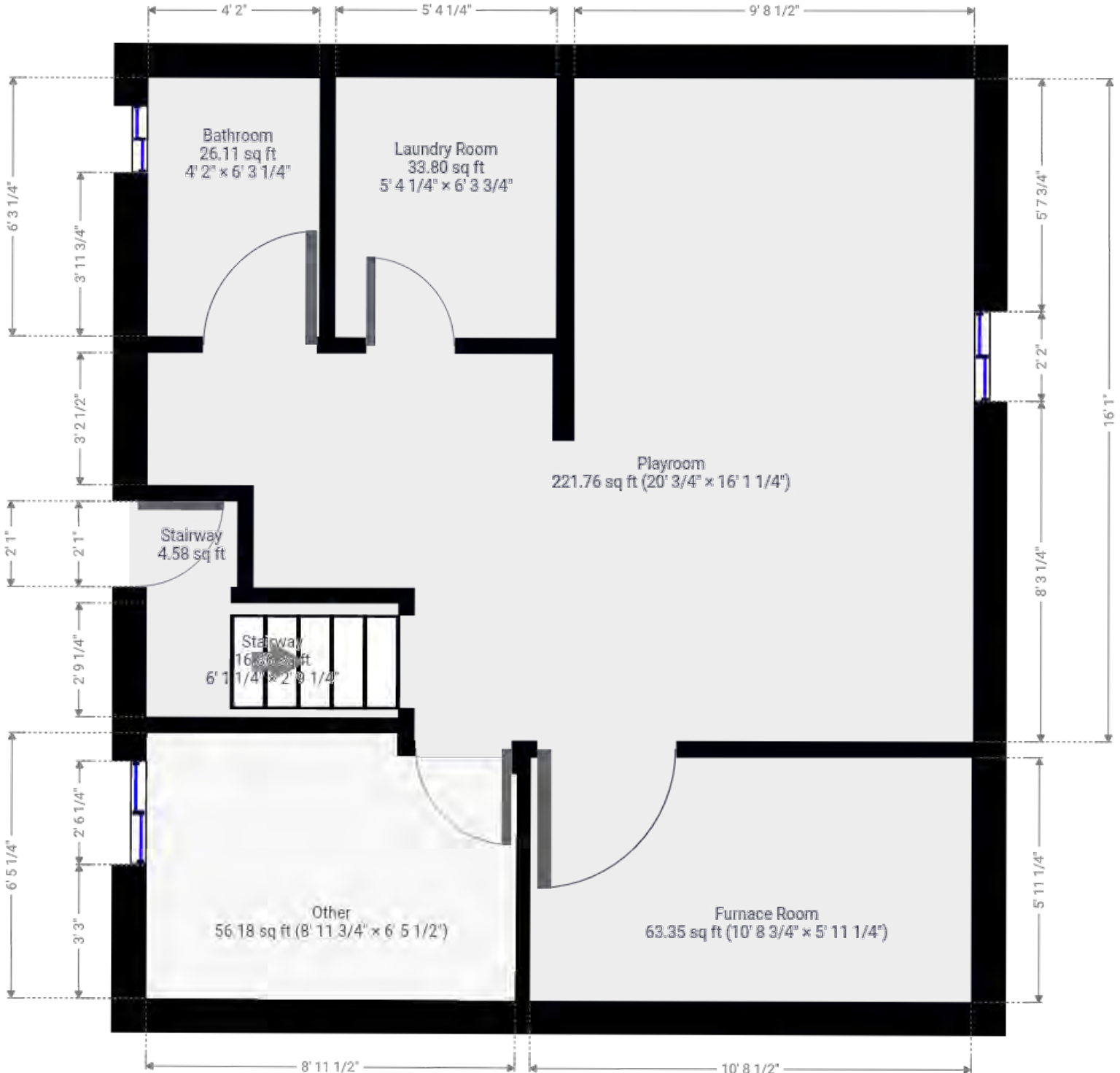
Approx Interior Area = 385.39 ft<sup>2</sup>  
Approx Exterior Area = 461.48 ft<sup>2</sup>





**Basement**  
(below grade)

Approx Interior Area = 448.59 ft<sup>2</sup>  
Approx Exterior Area = 520.97 ft<sup>2</sup>



### Main Room Interior Measurements

	Imperial	Metric	Interior ft <sup>2</sup>
<b>Ground Floor (above grade)</b>			
<b>Approx Exterior ft<sup>2</sup></b>			
<b>697.57 ft<sup>2</sup></b>			
Living Room	10'1 x 13'4	3.07m x 4.06m	133.84 ft <sup>2</sup>
Dining Room	14'1 x 13'11	4.29m x 3.63m	169.37 ft <sup>2</sup>
Kitchen	10'7 x 10'11	3.23m x 3.33m	115.21 ft <sup>2</sup>
Bathroom	4'10 x 3'3	1.47m x 0.99m	15.86 ft <sup>2</sup>
<b>Second Floor (above grade)</b>			
<b>Approx Exterior ft<sup>2</sup></b>			
<b>693.15 ft<sup>2</sup></b>			
Bedroom	10'11 x 13'6	3.35m x 4.11m	133.48 ft <sup>2</sup>
Bedroom	10'9 x 10'11	3.28m x 3.33m	105.09 ft <sup>2</sup>
Bedroom	9'11 x 9'	3.02m x 2.74m	85.58 ft <sup>2</sup>
Bedroom	10'7 x 8'7	3.23m x 2.62m	88.04 ft <sup>2</sup>
<b>Third Floor (above grade)</b>			
<b>Approx Exterior ft<sup>2</sup></b>			
<b>461.48 ft<sup>2</sup></b>			
Principal Bedrm	20'9 x 18'	6.32m x 5.49m	273.94 ft <sup>2</sup>
Bathroom	8'6 x 7'6	2.59m x 2.29m	63.45 ft <sup>2</sup>
Closet	6'11 x 5'8	2.11m x 1.73m	38.37 ft <sup>2</sup>
<b>Basement (below grade)</b>			
<b>Approx Exterior ft<sup>2</sup></b>			
<b>520.97 ft<sup>2</sup></b>			
Playroom	20'1 x 16'1	6.12m x 4.90m	221.76 ft <sup>2</sup>
Furnace Room	10'9 x 5'11	3.28m x 1.80m	63.35 ft <sup>2</sup>
Laundry Room	5'4 x 6'4	1.63m x 1.93m	33.80 ft <sup>2</sup>
Bathroom	4'2 x 6'3	1.27m x 1.91m	26.11 ft <sup>2</sup>
Other	9' x 6'6	2.74m x 1.98m	56.18 ft <sup>2</sup>

## Totals

**Total Above Grade Exterior ft<sup>2</sup>**

Approx Above Ground Exterior Area = 1852.2 ft<sup>2</sup>

**Total Exterior ft<sup>2</sup>**

Approx Exterior Area (basement included) = 2373.17 ft<sup>2</sup>

Rooms have irregular shapes and, as such, cannot be truly represented by one length and width. The length and width listed above are the longest length and width of the room. Because of this, room area is not always equal to the product of length and width but has been calculated in any floor area accurately using all wall measurements.

