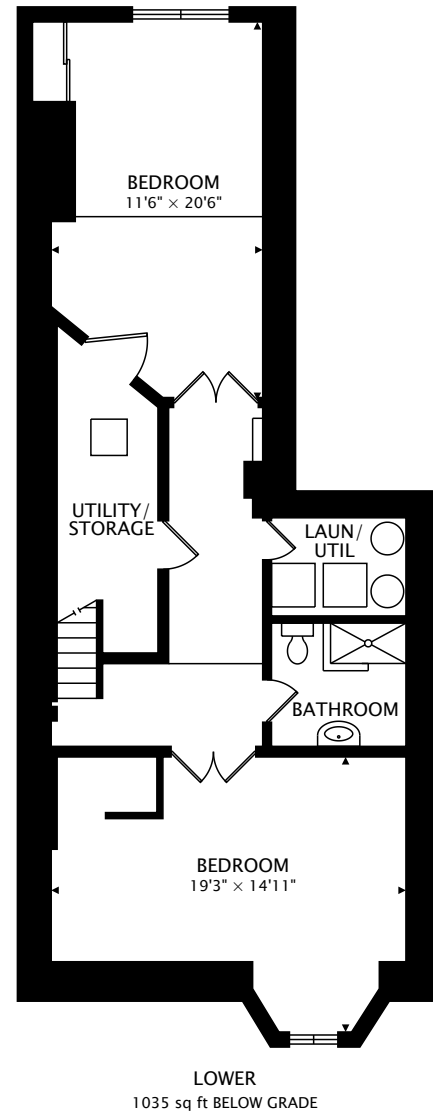
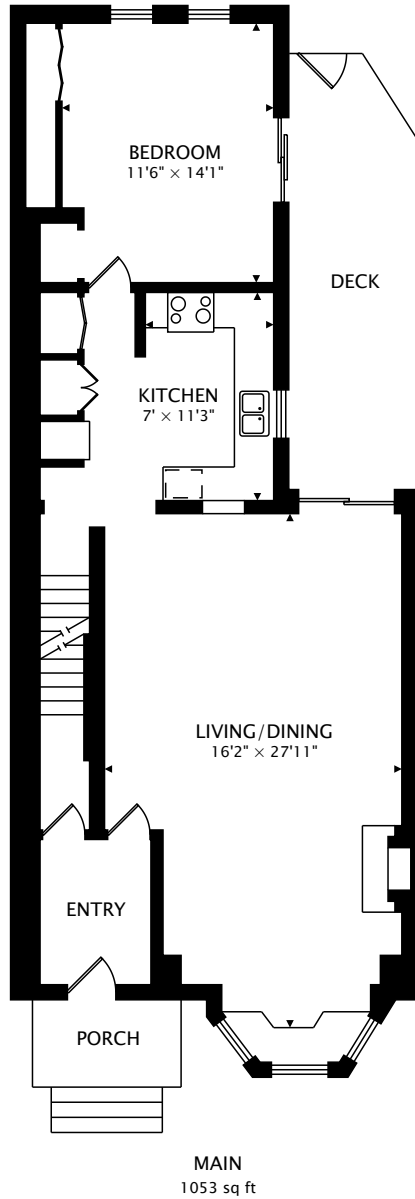
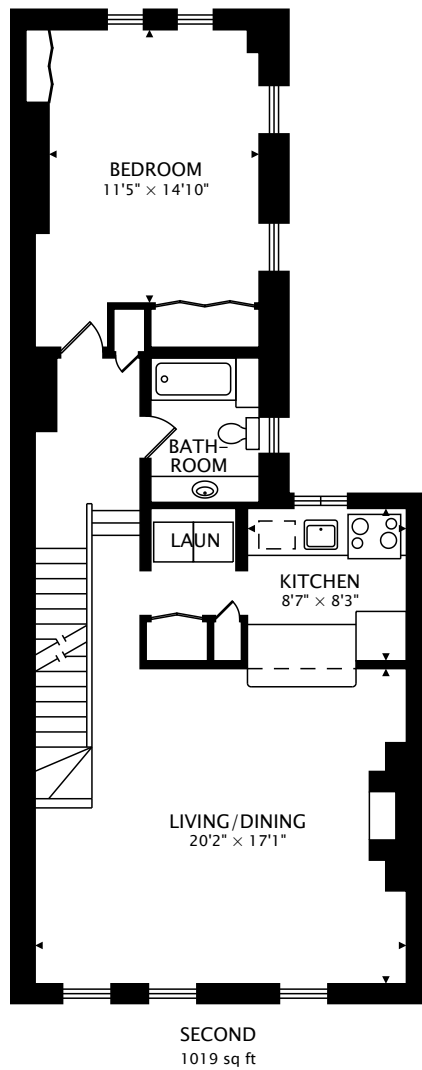
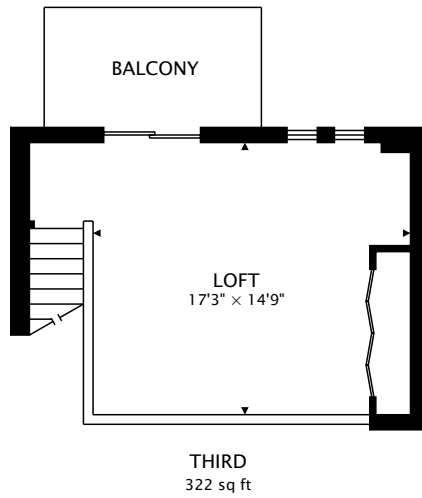


31 LINDEN ST  
TORONTO, ON



TOTAL  
2394 sq ft + 1035 sq ft BELOW GRADE



CAPTURED ON: 17 JUL 2020  
DIMENSIONS, AREAS, LAYOUTS AND DETAILS ARE APPROXIMATE  
AND SHOULD BE CONSIDERED ILLUSTRATIVE ONLY.