

# 28 Somerset Way

Unit 1311



## QUICK FACTS

- 1 + 1 bed + 2 bath
- Huge den
- Large family sized kitchen
- Gated community in a sought-after hood
- 1 underground parking

[GetWhatYouWant.ca](http://GetWhatYouWant.ca)

# 5 Things we love, love, love about this condo

1. **Own a condo**, live like it's a townhouse in a cute, gated community
2. **Cute front terrace** with a real front door, escape the snow with hallway access to parking
3. **An epic den** with triple closet that could be a second bedroom or formal dining
4. **Large "house-sized" kitchen** with tons of cupboards
5. **Excellent master with ensuite**, walk-in closet and additional storage space



**PSSST, WANT MORE  
DETAILS + PHOTOS?**  
[GetWhatYouWant.ca](http://GetWhatYouWant.ca)



# Where is a condo more than a condo? At 28 Somerset Way.

If you're looking to buy a condo but wish you were buying just a little bit more, you're in luck. This 1+1 bedroom, 2 bath condo in a sweet gated community gives you the extras that make you feel like you've gone one step up.

This unit feels more like a townhouse with laminate flooring, tiled kitchen and a front door and an adorable front terrace. Want to escape the snow? You also have hallway access from the underground parking into the spacious kitchen. Here you'll find loads of cabinets and exceptional counter space.

Then there's the den. It's big... like huge, with a triple panel closet and enough space to create another bedroom, incredible home office or formal dining area.

Not to be outdone by the den, the master bedroom also has a spacious walk-in closet, a storage area, an ensuite and a nook that easily holds a desk or extra dresser.

Located in Willowdale, in an area with a 96 Walkscore, this home is a short ten-minute stroll to the subway with easy access to shops, schools and highways.

---

This townhouse is located in a quiet complex, walking distance to Avondale park, Whole Foods, Rabba, the LCBO, and entertainment galore. Coined 'Toronto's hottest new neighbourhood' by Toronto Life, in 2015, Willowdale is a diverse community that has seen an amazing array of investment and development overall. Locals are within arm's reach to top schools and a host of big-city amenities without sacrificing greenery or peace and quiet.

You'll find awesome restaurants, cafes, shopping, grocery stores, parks and major roadway access. What's more, transportation to-and-from Willowdale is a breeze, with GO transit, the VIVA bus, and even York Region Transit all accessible within arm's reach. This is an area of our city that was built to rival that of old Toronto. The result? A sought-after 'hood that just continues to get better.

# The Local Vibe.

Willowdale

96  
/100

walk score

7  
/10

fido factor

## SCHOOLS

- McKee PS
- Cummer Valley MS
- Earl Haig SS

2 + 10

rail lines < 2 km  
bus lines < 0.5 km

1

grocery stores  
< 1 km

33 + 2

cafés + Starbucks  
< 1 km

100

transit score

16

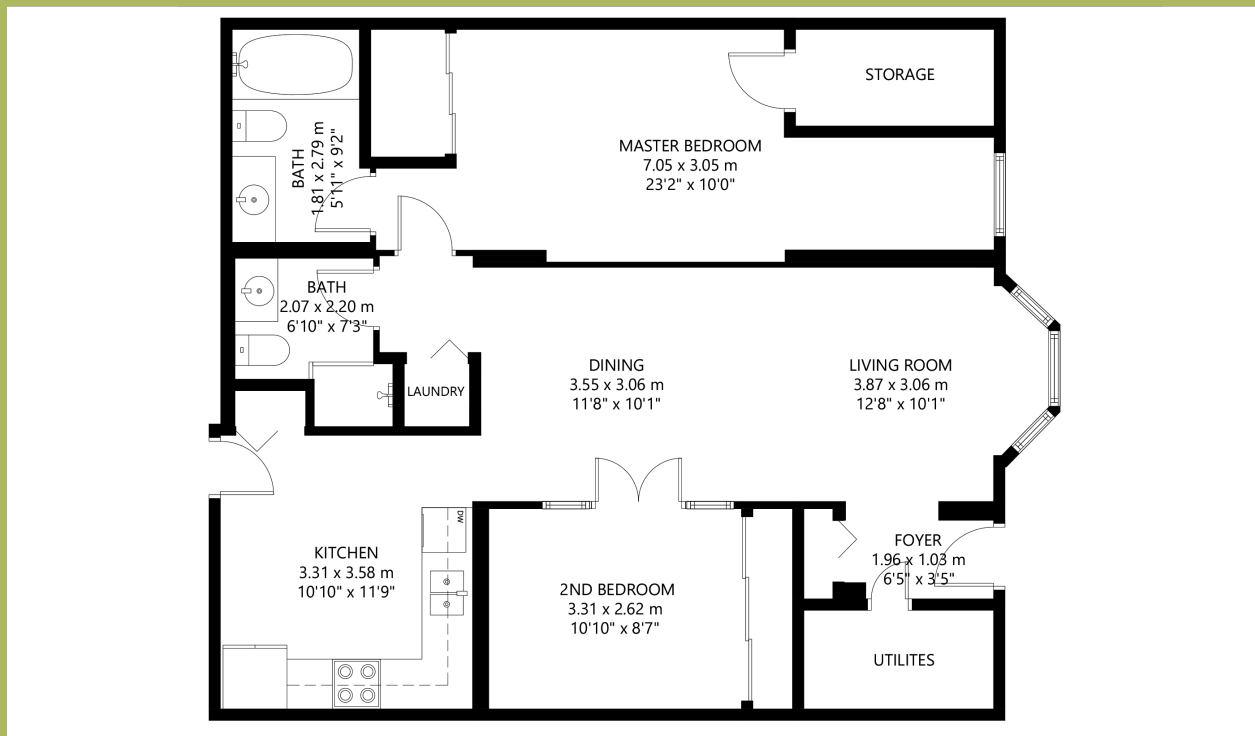
parks  
< 2 km

70+

restaurants  
< 1 km

## Floorplan

1005 sq. ft



WE'RE ALWAYS ONLINE SO YOU'RE ALWAYS IN THE KNOW.

**Kristin Shensel**  
Sales Representative

O. 416.274.2068 D. 416.938.0648  
kristin@getwhatyouwant.ca

the  
**BRELteam**

No BS. No Fridge Magnets.