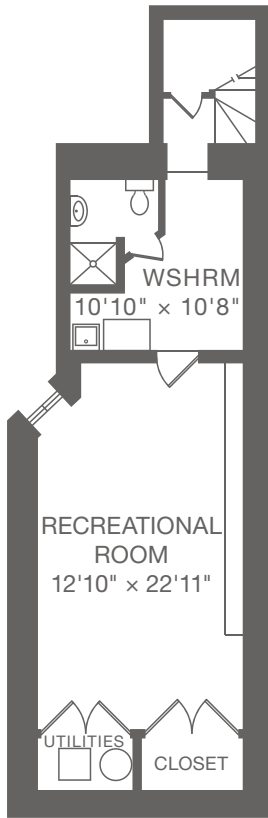
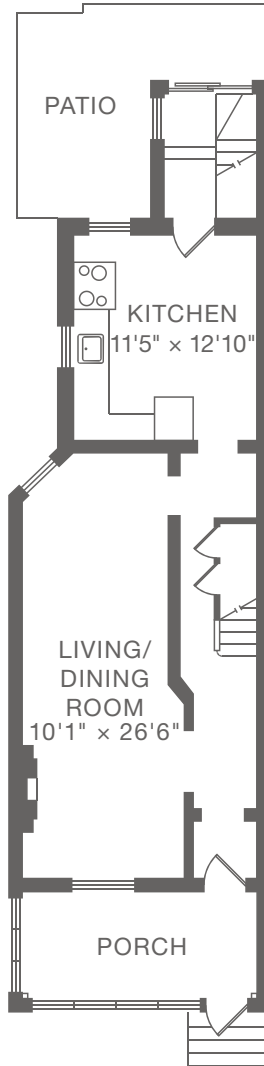


63 WESTHOLME AVENUE

1,768 SQUARE FEET ABOVE GRADE
+ 648 SQUARE FEET BELOW GRADE



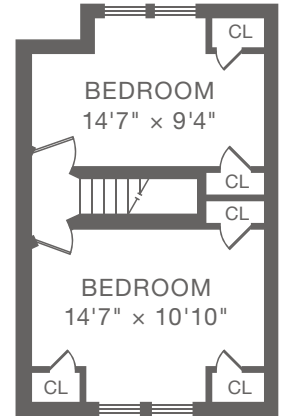
LOWER LEVEL
648 SQUARE FEET



MAIN FLOOR
673 SQUARE FEET



SECOND FLOOR
687 SQUARE FEET



THIRD FLOOR
408 SQUARE FEET



Measurements and calculations are approximate. To be used as guidelines only.