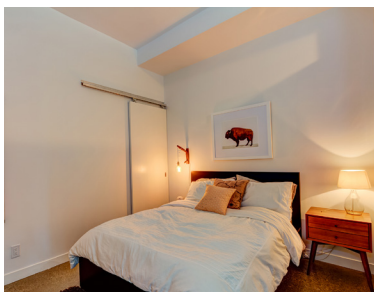




549 KING STREET EAST
SUITE 302

SAGE



STYLE MEETS FUNCTION AT 549 KING STREET SUITE 302

549 King Street is a boutique, mid-rise, condominium building that is conveniently nestled on the southeast corner of King and Sumach Street - in Toronto's East end. Minutes to the downtown core, the Gardiner Expressway, and (of course) King Street, residents of this building enjoy style coupled with convenience! Unit 302, at 549 King Street, is a unique, open-concept living space. This home offers 627 square feet of sleek living and makes incredible use of surface area - so it feels so much bigger than it actually is! This is a perfect place for any young professional who values style without compromising functionality. Take a quick commute home, and unwind, after a long day at the office, and you'll be greeted by your generous bedroom (with ample storage) modern hardwood floors, bright and breezy open-concept layout, and walkout to your very own, private (large!) balcony that overlooks the city (who needs a pub patio this summer...when you've got this spot!). Not one to stay inside? Take a few steps outdoors and walk, or hop on the streetcar, along King Street - where you'll find some of this city's finest: stores, restaurants, cafes, and shops - right at the heart of the downtown core.

View this property online @ 549KingStE-302.com



the
BRELteam

SAGE

No BS. No Fridge Magnets. No Broken Promises.



KRISTIN SHENSEL
Sales Representative

416.938.0658

kristin@getwhatyouwant.ca

Sage Real Estate Ltd., Brokerage, 416.483.8000
3091 Dundas Street West, Toronto, ON

Information and statements contained herein are from sources deemed to be reliable and assumed to be correct but no warranty or representations are made as to the accuracy thereof and same is subject to errors or omissions. This feature sheet is not intended to solicit sellers or buyers currently under contract with another brokerage.